



April 23, 2009

Colorado Coordinated Planning Group

Black Hills/Colorado Electric 2009 Senate Bill 100 Study

Improving life with energy

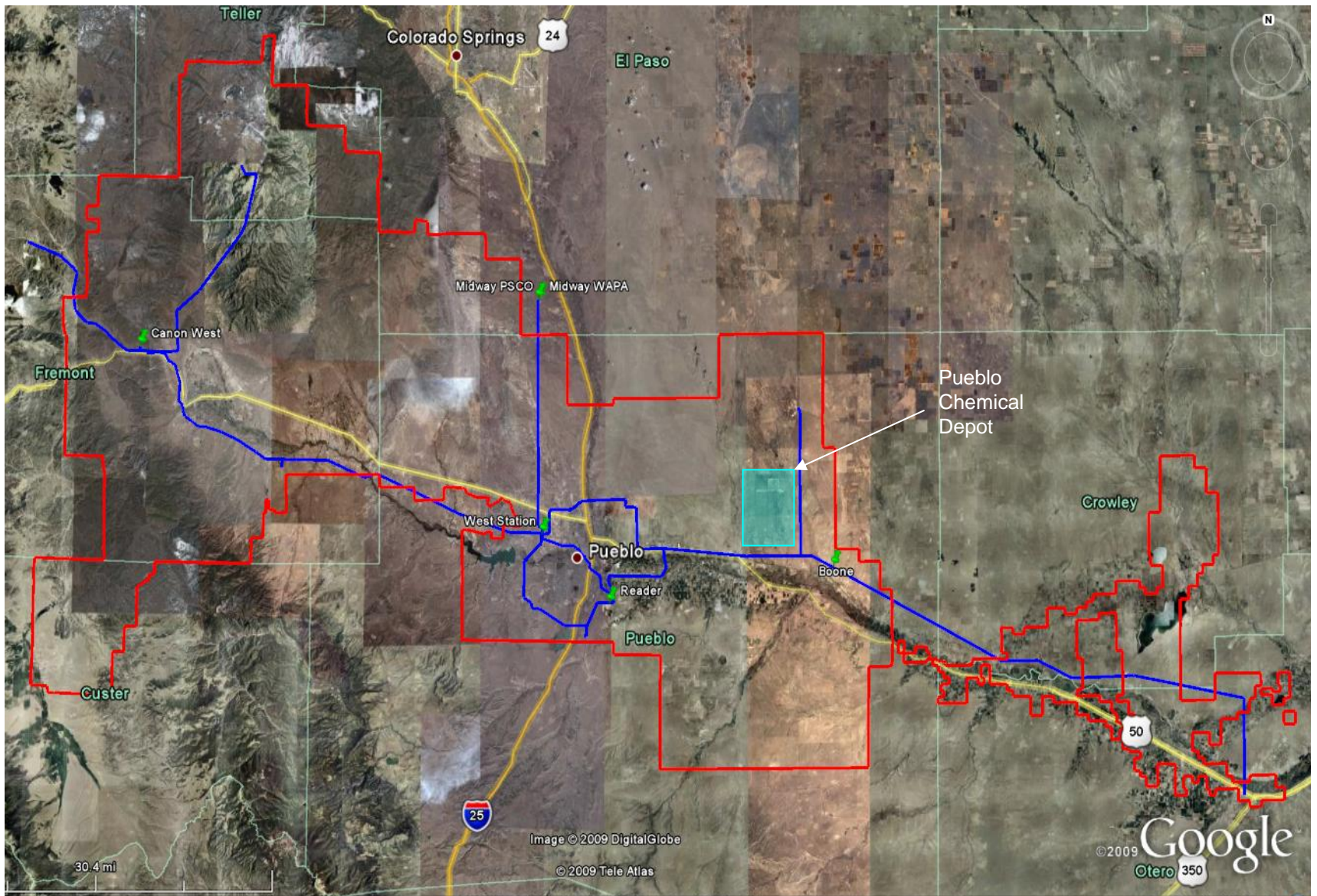


BHCE SB-100 Proposed Study

- Focus on delivery of power to load from interconnection points
- Potential injection at Pueblo Chemical Depot

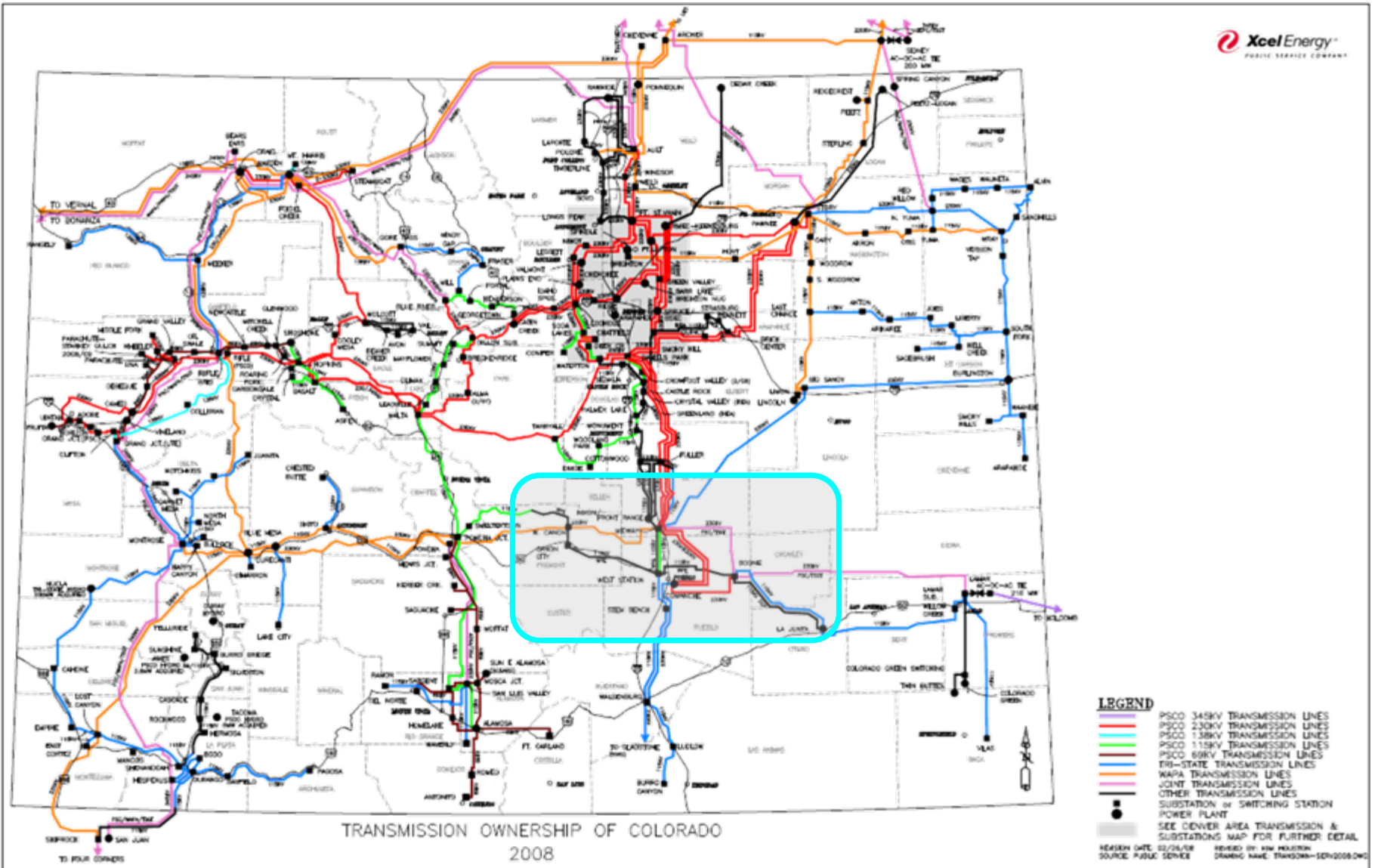
BHCE Energy Resource Zones

- Includes all of the BHCE service territory and transmission footprint
- Specifically evaluate injection at Pueblo Chemical Depot



Improving life with energy





Xcel Energy Colorado Transmission Ownership Map

Improving life with energy



Benchmark Load Scenarios

- 2015 Summer Peak
 - Used to identify primary projects
- 2027 Summer Peak
 - Used to identify long range needs
 - Define and plan for potential future upgrade needs

BHCE Resource Assumptions

- BHCE ERP filed with Commission on August 5, 2008
 - Non-intermittent Resource Solicitation issued on March 25, 2009
 - Responses to the Solicitation are due June 8, 2009
- Location of ERP resources are unknown
- Evaluate 200 MW resource at Pueblo Chemical Depot
- Remaining resources assumed off-system

BHCE SB-100 Study Timeline

- April 22, 2009 – Stakeholder Meeting
- May 2009 – Develop base cases and load scenarios
- June/July 2009 – Perform power flow analysis and identify projects
- August 2009 – Results review meeting
- August-October 2009 – Develop CPCN's

Study Coordination

- Coordination meetings as required; meeting announcements will be posted and send via email
- Study and project updates to be presented at CCPG meetings.
 - Additional opportunity for stakeholder participation
- Planning an information filing with the Colorado PUC prior to filing of CPCN's
- Developing a SB-100 informational website
 - Will include presentation materials, meeting announcements, etc.
 - Meeting materials currently posted on OASIS
 - <http://www.oatioasis.com/bhct/index.html>

Questions

Eric Egge, PE

eric.egge@blackhillscorp.com

(605) 721-2646

Improving life with energy

